

# Corporate Work Study Program

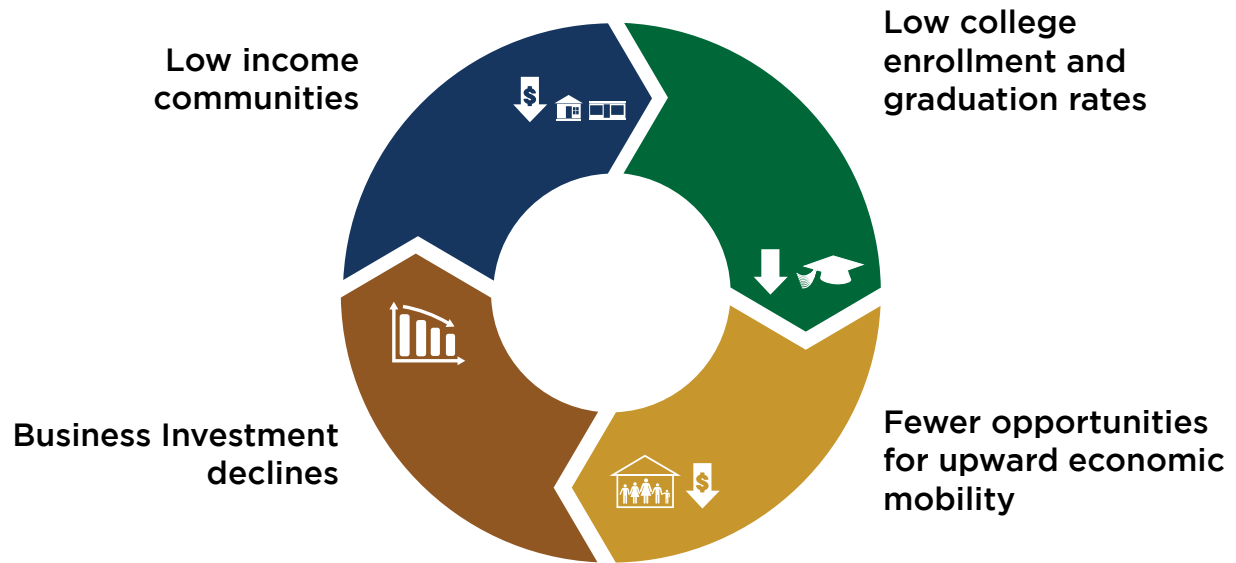


**CRISTO REY**  
ST. MARTIN COLLEGE PREP

# Current Reality

---

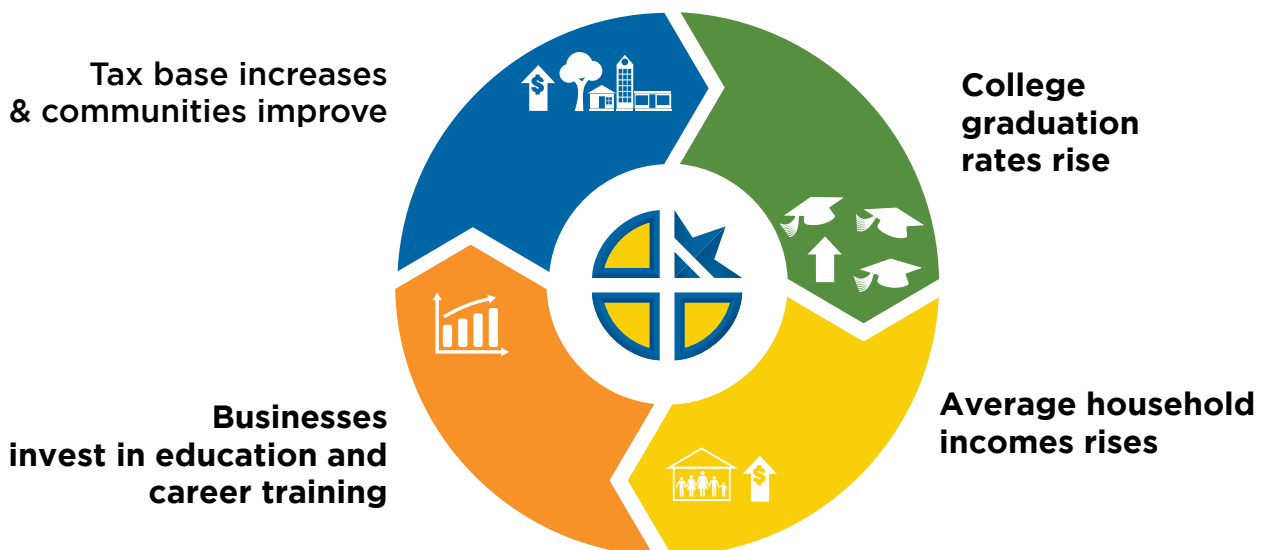
Economically depressed communities experience low college enrollment and graduation rates. This, in turn, leads to a less skilled workforce and fewer growth opportunities for all involved. It is a negative cycle that repeats itself far too often across our country.



# A Powerful Solution

---

Cristo Rey St. Martin, with its innovative **Corporate Work Study Program**, significantly increases college enrollment and graduation rates for students from low-income families. Cristo Rey St. Martin students are learning to be college ready, work prepared and ready to change the world. You can be part of a powerful growth cycle.



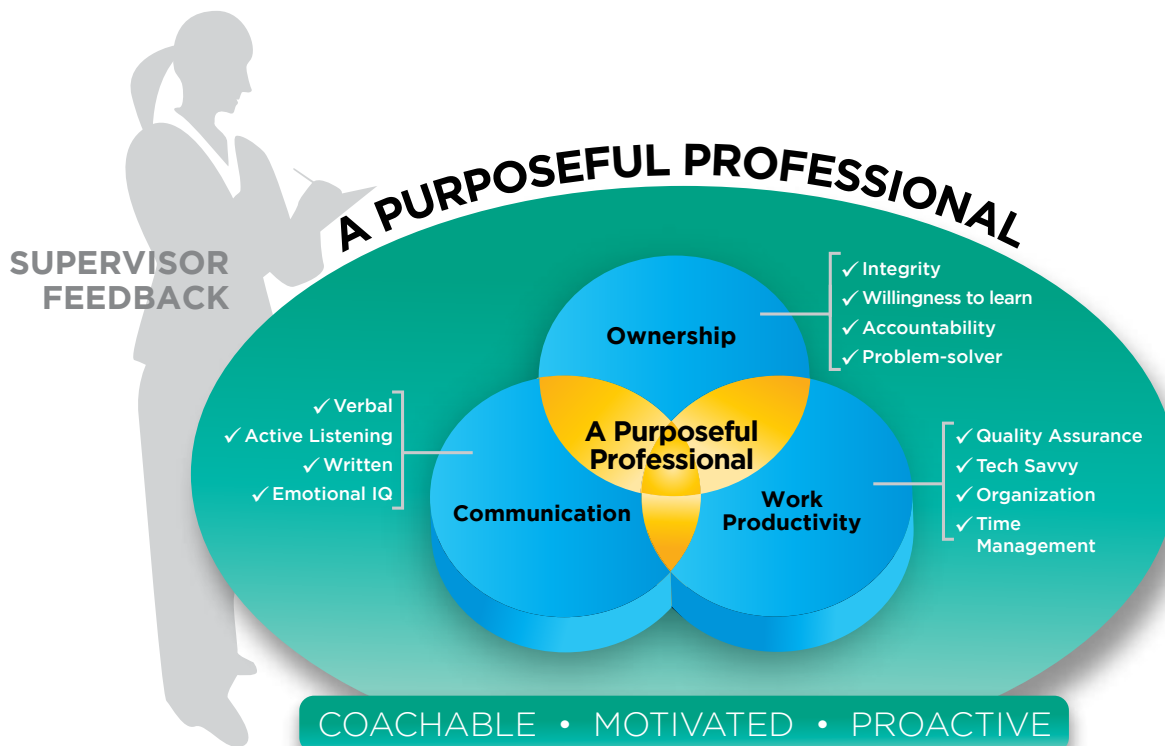


## CRSM Students Excelling and Adding Value

Cristo Rey students are highly motivated - each carries a full course load, in addition to the work-study program, and has a family/faculty network committed to supporting their success.

Every Cristo Rey student completes a comprehensive orientation and job training program with a clear understanding of the criteria by which they will be evaluated.

Cristo Rey maintains a dynamic feedback loop between dedicated Cristo Rey staff and on-site supervisors to guarantee success and productivity for both the students and the departments in which they work.

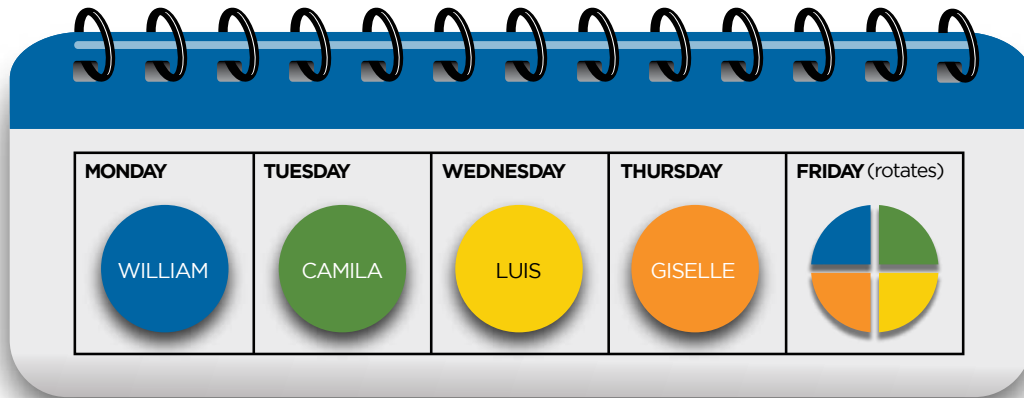


Our *Purposeful Professional* training curriculum is so successful that some partner companies are adopting it for their own employees.



# How the Program Works

The Corporate Work Study Program is a separately incorporated non-profit and functions like an employment leasing agency. Students are employees of the CWSP and Cristo Rey manages all job-related paperwork and employment expenses including payroll taxes, worker's comp, liability insurance and benefits. CWSP handles these details so our students AND our business partners can focus on work, relationships, and impact.



A team of four students, one from each grade, shares a full-time (Mon-Fri) position. Each student works five full days a month on a rotational basis.

Students may share an FTE position in one department or be split among different departments within the company.

They work in-person, remotely or a hybrid schedule. The partnership is flexible and can adapt to any workplace needs.

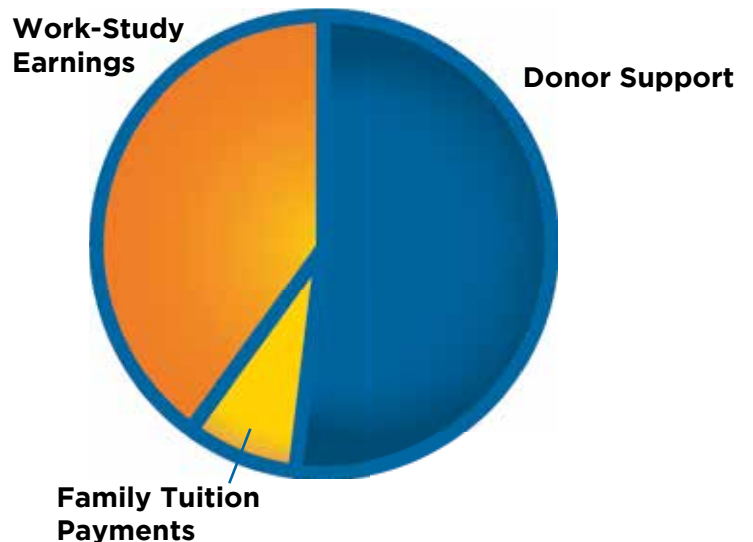
Cristo Rey transports students to and from work each day and their academic schedules are structured to ensure that they never have a class on a workday.

The company pays a competitive fee for the services provided. It is a business expense, not a donation. Student earnings are applied directly to the cost of their education.

A CWSP staff member is assigned to each business partner to co-manage the students.

## Supplementing the Cost of Tuition

Money earned through the Corporate Work Study Program covers the portion of tuition not covered by traditional fundraising and family tuition payments, making a college preparatory education possible for those who otherwise could not afford it.





## Become a Corporate Work Study Partner Today!

---



- Invest in the development of a diverse workforce that is well-trained, reliable, cost-effective and technically proficient.
- Develop a pipeline of diverse, college-educated talent for the future.
- Provide leadership and mentorship opportunities to first-time managers.
- Decrease economic inequality and advance racial equity.
- Achieve diversity, equity and inclusion objectives through this work-study partnership.
- Make a significant impact on employees, students, families and the community.

# What Our Partners Say

---



*"We are a proud long-term supporter of the Cristo Rey Work Study Program because it works. Cristo Rey prepares their high school students for the world of work at an early age, while promoting academic excellence. Over the many years we have been associated with the program, we have seen students grow from shy freshmen who are curious about the corporate world to confident, determined seniors who contribute greatly to their assigned projects and tasks."*

Cora Buckner  
Abbott Talent Acquisition



*"Angel is an incredibly talented student. I am always impressed with how quickly he picks up new skills and software. He is versatile and able to harness both his creative skills in PowerPoint and Canva, and his analytical skills with data in Excel and Microsoft Forms. Angel tackles every single type of task or project thrown his way. It has been an honor seeing him grow so much over these last three years of working together."*

Jessica Sharpe  
Barilla, Human Resources Generalist



*"Discover proudly partners with Cristo Rey in support of its Work Study Program because it is an invaluable reciprocal program for the students and Discover. The students benefit by gaining hands-on experience while working on unique projects, as well as by their exposure to our diverse and inclusive corporate work environment. Discover and its customers benefit greatly from the students' value-add work. It furthers the company's mission to help people in the communities we serve spend smarter, manage debt better and save more so they can achieve a brighter financial future."*

Tomás Rivera  
Vice President, Associate General Counsel



*"I support Cristo Rey St. Martin because it works. Supervisors report that these students are professional, serious and focused. Not only are we making a huge difference in their lives - but their presence in our workplace is making us better at what we do. The mentorship of these young students is having a remarkable effect on every supervisor and every department in which they are placed."*

Terry Brady  
CEO, President, Trustee, Underwriters Laboratories



*"We have been proud to be part of the Cristo Rey St. Martin Corporate Work Study Program for over 10 years. We have seen many remarkable students during that time, who have consistently exceeded our expectations and made important contributions to our organization. At the same time, this has provided a growth opportunity for our team members as they have a chance to learn and grow as mentors of these young people. This truly is a program that works all the way around — for the students, for us, and for our community."*

Chuck Greener  
Senior Vice President, Global Chief Public Affairs Officer  
Walgreens Boots Alliance

**To discuss a Corporate Work Study partnership please contact:**

Candice Tonon, Director of Development 224.219.9712 [candicetonon@cristoreystmartin.org](mailto:candicetonon@cristoreystmartin.org)  
Brian Weinberg, Director of Work Study 224.219.9724 [brianweinberg@cristoreystmartin.org](mailto:brianweinberg@cristoreystmartin.org)  
3106 BELVIDERE RD WAUKEGAN, ILLINOIS 60085 CRISTOREYSTMARTIN.ORG