

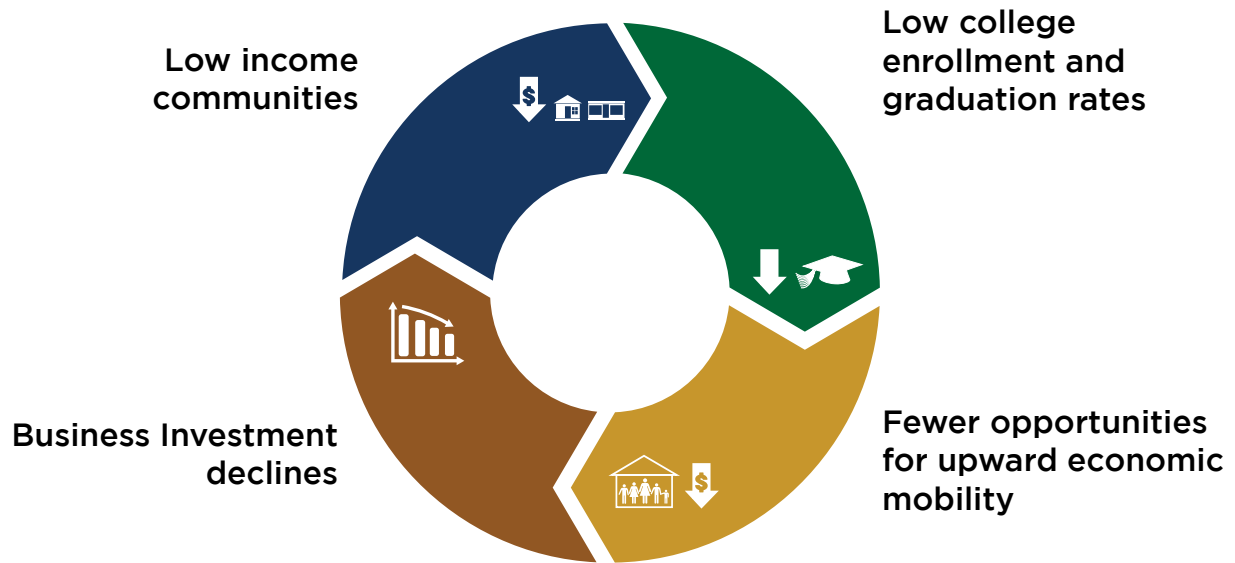
Corporate Work Study Program



CRISTO REY
ST. MARTIN COLLEGE PREP

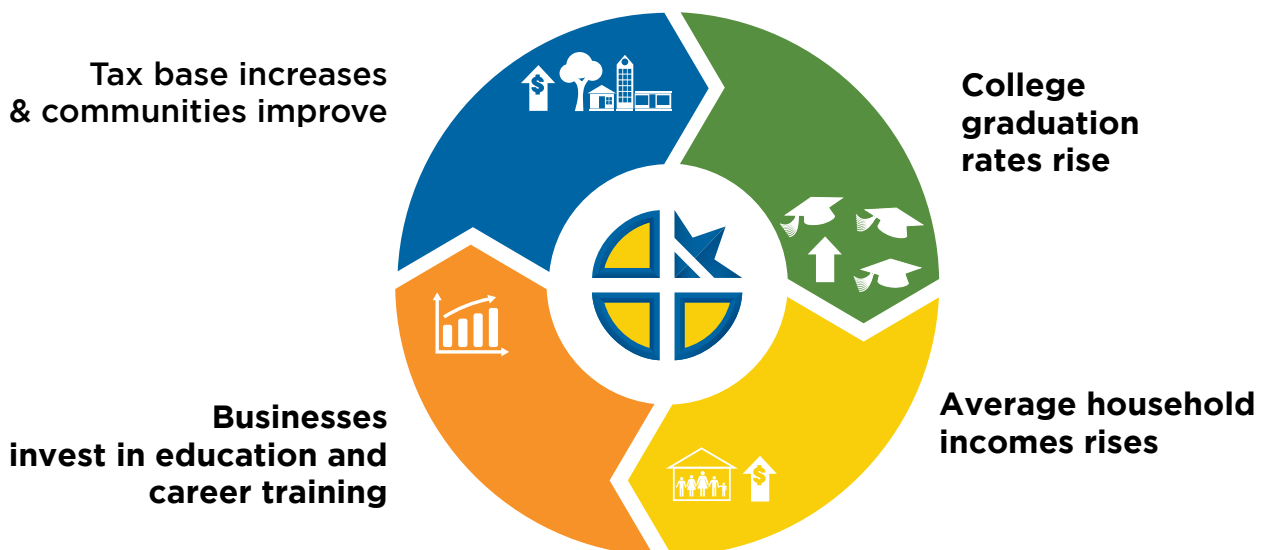
Current Reality

Economically depressed communities experience low college enrollment and graduation rates. This, in turn, leads to a less skilled workforce and fewer growth opportunities for all involved. It is a negative cycle that repeats itself far too often across our country.



A Powerful Solution

Cristo Rey St. Martin, with its innovative **Corporate Work Study Program**, significantly increases college enrollment and graduation rates for students from low-income families. Cristo Rey St. Martin students are learning to be college ready, work prepared and ready to change the world. You can be part of a powerful growth cycle.



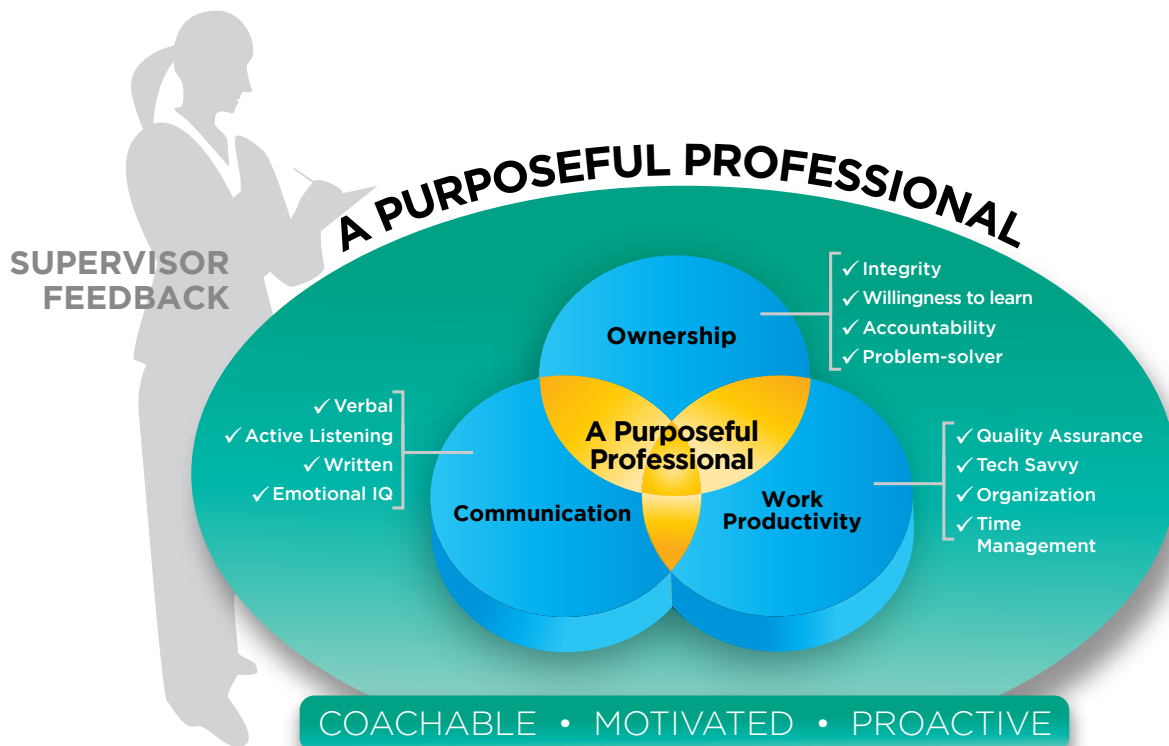


CRSM Students Excelling and Adding Value

Cristo Rey students are highly motivated - each carries a full course load, in addition to the work-study program, and has a family/faculty network committed to supporting their success.

Every Cristo Rey student completes a comprehensive orientation and job training program with a clear understanding of the criteria by which they will be evaluated.

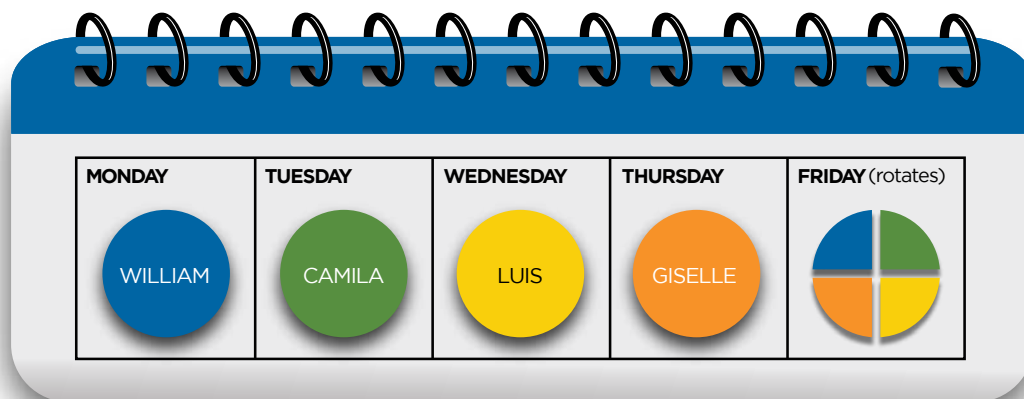
Cristo Rey maintains a dynamic feedback loop between dedicated Cristo Rey staff and on-site supervisors to guarantee success and productivity for both the students and the departments in which they work.



Our *Purposeful Professional* training curriculum is so successful that some partner companies are adopting it for their own employees.

How the Program Works

The Corporate Work Study Program is a separately incorporated non-profit and functions like an employment leasing agency. Students are employees of the CWSP and Cristo Rey manages all job-related paperwork and employment expenses including payroll taxes, worker's comp, liability Insurance and benefits. CWSP handles these details so our students AND our business partners can focus on work, relationships, and impact.



A team of four students, one from each grade, shares a full-time (Mon-Fri) position. Each student works five full days a month on a rotational basis.

Students may share an FTE position in one department or be split among different departments within the company.

They work in-person, remotely or a hybrid schedule. The partnership is flexible and can adapt to any workplace needs.

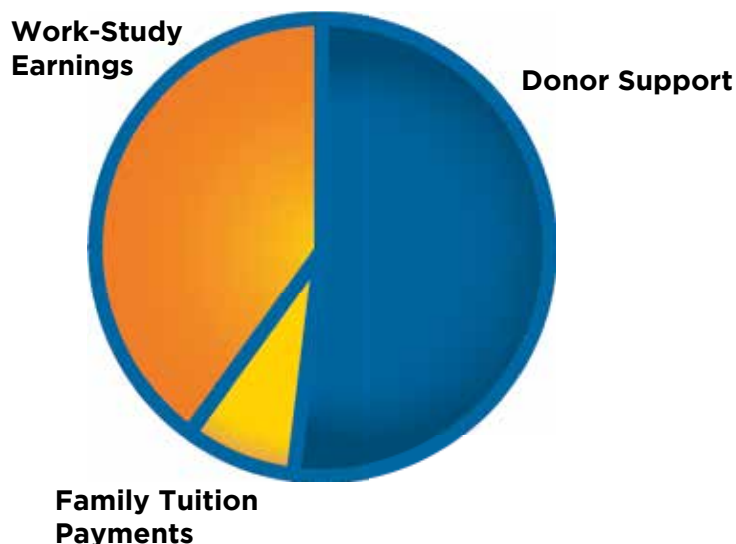
Cristo Rey transports students to and from work each day and their academic schedules are structured to ensure that they never have a class on a workday.

The company pays a competitive fee for the services provided. It is a business expense, not a donation. Student earnings are applied directly to the cost of their education.

A CWSP staff member is assigned to each business partner to co-manage the students.

Supplementing the Cost of Tuition

Money earned through the Corporate Work Study Program covers the portion of tuition not covered by traditional fundraising and family tuition payments, making a college preparatory education possible for those who otherwise could not afford it.





Become a Corporate Work Study Partner Today!



- Invest in the development of a diverse workforce that is well-trained, reliable, cost-effective and technically proficient.
- Develop a pipeline of diverse, college-educated talent for the future.
- Provide leadership and mentorship opportunities to first-time managers.
- Decrease economic inequality and advance racial equity.
- Achieve diversity, equity and inclusion objectives through this work-study partnership.
- Make a significant impact on employees, students, families and the community.

What Our Partners Say



Abbott

"We are a proud long-term supporter of the Cristo Rey Work Study Program because it works. Cristo Rey prepares their high school students for the world of work at an early age, while promoting academic excellence. Over the many years we have been associated with the program, we have seen students grow from shy freshmen who are curious about the corporate world to confident, determined seniors who contribute greatly to their assigned projects and tasks."

Cora Buckner
Abbott Talent Acquisition



"Angel is an incredibly talented student. I am always impressed with how quickly he picks up new skills and software. He is versatile and able to harness both his creative skills in PowerPoint and Canva, and his analytical skills with data in Excel and Microsoft Forms. Angel tackles every single type of task or project thrown his way. It has been an honor seeing him grow so much over these last three years of working together."

Jessica Sharpe
Barilla, Human Resources Generalist



"Baxter International Inc. has been a proud partner of the Cristo Rey St. Martin Corporate Work Study Program for the past 20 years since its inception. We have witnessed firsthand the benefits a program of this caliber offers to our organization - providing unique mentorship opportunities to our people managers, achieving our diversity, equity and inclusion goals through the work-study partnership, and providing well-trained and diverse candidates to our workforce. We are thrilled to be able to provide students with exposure to different job functions and networking opportunities that can lead to a successful and fulfilling career."

Verónica Arroyave, Ph.D., MPH
Vice President, Corporate Responsibility and Global Philanthropy



"The way Cristo Rey benefits organizations is three-fold: first and foremost, talent. We are able to get a fresh perspective from the Cristo Rey students. They are helping us push the envelope and ask the question 'why not?' I'm excited to have students that simply ask us why because oftentimes we need to ask ourselves that. Second, having a workforce that is flexible, so in situations where we might not have the capacity, our Cristo Rey students fit right in and add value. And then thirdly, when we look at the bottom line of what the program actually cost us - the value that we're seeing...hand down, solid return on investment. Any organization would benefit from having the Cristo Rey program".

Charlotte Farmer
Chief Operating Officer, UL Research Institutes



"Since 2004, Libertyville Bank & Trust has collaborated with Cristo Rey St Martin as a Corporate Work Study Program partner. Serving highly motivated students who value academic excellence through a work-study program, CRSM college prep high school has created an important talent pipeline that is critical to elevating the economic vitality of our local communities. For CRSM, this collaboration provides students with valuable real-world experience in an office setting, enhancing their education and job readiness skills. By working at the Bank, students gain access to financial literacy education, professional skills, and exposure to career opportunities in the banking industry. This hands-on experience can be pivotal in exposing students to a variety of professionals offering a tangible path to higher education and stable employment."

Stephen L. Madden
CEO, Libertyville Bank & Trust Company, N.A.

To discuss a Corporate Work Study partnership please contact:

Sara Stanke, Director of Corporate Work Study Development 224-565-3272 sarastanke@cristoreystmartin.org

Brian Weinberg, Director of Work Study 224.219.9724 brianweinberg@cristoreystmartin.org

3106 BELVIDERE RD WAUKEGAN, ILLINOIS 60085 CRISTOREYSTMARTIN.ORG